



Artist impression only - landscaping shown at establishment

Port Dock Railway Line

Project Update – August 2024

We're returning rail services to the heart of Port Adelaide!

Start of services announced

Train services to the new Port Dock Station and the bus interchange will start from Sunday 25 August 2024.

Timetables for both train and bus services are now available at adelaidemetro.com.au

Community Open Day – Let's Celebrate!

To celebrate the completion of the Port Dock Railway Line Project and to thank the community, we would like to invite you to a Community Open Day.

- **When** Saturday 24 August 2024, between 11am and 2pm
- **Where** Lipson Street car park and new Port Dock station

This project update includes all the information you need to know about this event. We hope to see you there!

Important features



Better access to the Outer Harbor Greenway, improving access for people walking and riding.



Boosting South Australia's economy supporting 100 jobs during construction.



A 30-minute service on weekdays and weekends.



Supporting the revitalisation and renewal of the Port Adelaide town centre and waterfront.



Improving connections to tourist attractions and visitor destinations.



Government of South Australia
Department for Infrastructure and Transport

Delivered by

PTP
ALLIANCE

Construction update

A huge amount of work has been completed in the last six months to achieve this important project milestone.

Lipson Street car park upgrade

We've upgraded the Lipson Street car park – this included installing new asphalt, line marking, new kerbs, improving the driveway access and planting garden beds and trees.

Bus interchange

We've created a new bus interchange to improve connections between the rail services and the bus network, allowing easy access to tourist attractions and visitor destinations.

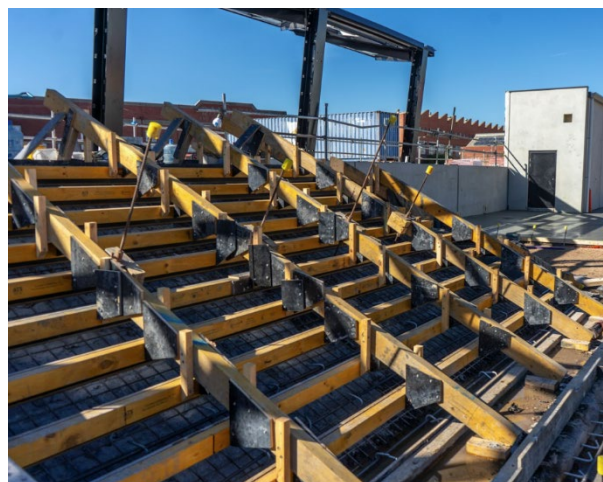
Plaza

We've planted new trees at the plaza, created new garden beds, a lawn area and installed a steel arbor and seating.

Port Dock railway station

We've completed the main works for the new Port Dock railway station. These works included the construction of a 120-metre-long station platform, a shelter canopy for passengers, a new facilities building for train drivers and a Communications Equipment Room.

Passenger information can now be shown on the new electronic 'Smart' signage. The newly installed speakers can also be used to let passengers know when trains are coming and going.



Early works on the platform stairs (April 2024)



Installed station shelter canopy (May 2024)



Shrubs and trees planted in garden beds located at the new bus interchange and station plaza (July 2024)

Rail works

In June 2024, we completed the installation of new track and drainage along the re-established spur line. This was followed by the initial testing of the new track and rail signalling system.



Hi-rail machine on the new passenger rail track (May 2024)



Aerial perspective at the end of the new platform and passenger rail track, facing south (May 2024)

Outer Harbor Greenway and streetscape works

We've created better access to the Outer Harbor Greenway, improving access for people walking and riding.

The re-alignment of a section of the Outer Harbor Greenway included:

- new asphalt, line marking, wayfinding signage and landscaping along the new shared use path;
- upgraded footpath, tree planting, improved drainage and new on-road cyclist sharrows (painted bike symbols with arrows to indicate a bicycle route) on the western side of Barlow Street and Baker street;
- two new pedestrian refuge islands on St Vincent Street, between Baker Street and Todd Street; and
- upgrades to the existing shared use path connections from the Grand Junction Road bridge path.

Two new dedicated crossings from the new interchange are now also open at Lipson Street to provide safer pedestrian access.

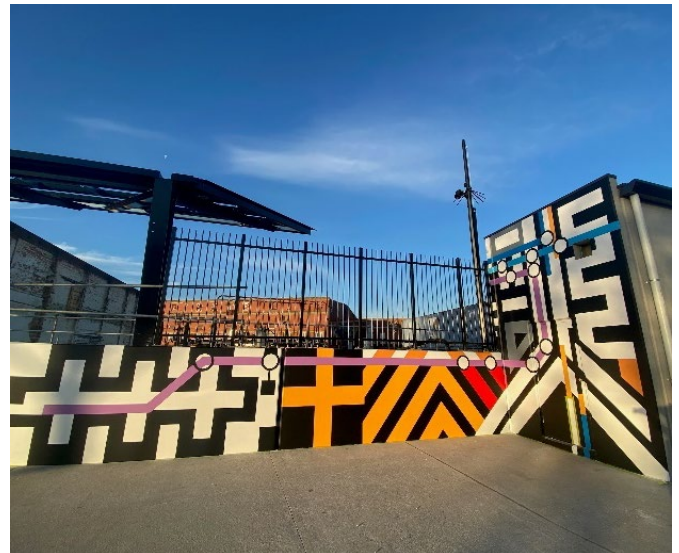
Public artwork

Together with the City of Port Adelaide Enfield, we have been supporting local public artwork opportunities around the project area, including installing station murals.

Station murals

Adelaide artist Sam Songailo was selected to create the railway-inspired murals at the new Port Dock railway station.

The artwork ties in with the history of the South Australian railways and the nearby National Railway Museum's train history.



Progress image of the artwork installation (May 2024)



Progress image of the artwork installation (May 2024)



Completed vinyl wrapped artwork at the new station's public toilet facility (May 2024).

Community Open Day – event information

To celebrate the completion of the Port Dock Railway Line Project and to thank the community, please join us:

When: Saturday 24 August 2024

Time: between 11am and 2pm

Location: Lipson Street car park, Port Adelaide

What's on

- Welcome to Country
- Junction Community Centre workshop
- Local dance performance
- Emergency Services vehicle displays
- Free sausage sizzles (gold coin donation for drinks)
- Free face painting
- Coffee and food trucks
- Local business raffle and voucher prizes - drawn at the main pavilion at 1.30pm
- Stationary train located at the new Port Dock Railway Station - be one of the first to board a train at the new station.

We encourage you to support local businesses in Port Adelaide after the event concludes. *Please note this is an alcohol-free event.*

Note: If it is necessary to cancel the event due to forecast weather conditions, advice will be provided at ptpa.com.au/portdockrailway

Museums in the Port – free entry!

Between 11am and 2pm, there will be free entry to the National Railway Museum (NRM), South Australian Aviation Museum, Clipper Ship City of Adelaide and South Australian Maritime Museum.

The NRM is a short walk from the main event area, and a free shuttle bus will run between all other Museums in the Port during the

event. Please see the event map overleaf to view the free shuttle bus pick up/drop off locations.

Getting to and from the event

Some free on-street parking will be available on Lipson Street (south) and Barlow Street, Port Adelaide, as well as surrounding streets.

For attendees using public transport, please visit adelaidemetro.com.au to plan your journey.

Event traffic management – car park closure and Lipson Street closure

Closure of Lipson Street car-park: From 9pm on Friday 23 August 2024 to 5pm Saturday 24 August 2024.

On Saturday 24 August 2024, traffic management will be in place along Lipson Street, between St Vincent Street and Godfrey Street. Here are the details:

- **Partial Closure of Lipson Street:** From 8am to 9am and from 2:30pm to 5pm, there will be a partial closure for event set-up and pack down. Driveway access to properties and businesses will be maintained during this time.
- **Full Closure of Lipson Street:** From 9am to 2:30pm, there will be a full closure of Lipson Street. Traffic controllers will be on site to assist with access if required.

More information

Please see the event map over the page for further information including the event location, road closures and temporary site changes.

- Visit ptpa.com.au/portdockrailway
- Email portdockrailway@ptpa.com.au
- Call 1300 705 992 if you have any questions or accessibility requirements.

Event map

Port Dock Railway Line Project Community Open Day








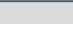
Saturday 24 August 2024
11am to 2pm

Includes FREE entry to

-  **SA Maritime Museum**
126 Lipson Street
-  **SA Aviation Museum**
16 Bedford Street
-  **National Railway Museum**
76 Lipson Street
-  **Clipper Ship City of Adelaide**
Dock 2, Honey Street

**Event location
free entry**

LEGEND

-  Event location
-  Road temporarily closed between 9am and 2.30pm
-  Traffic access
-  Event free shuttle bus stop
-  Railway Station
-  Adelaide Metro bus stop
-  Pedestrian access
-  Outer Harbor Greenway

