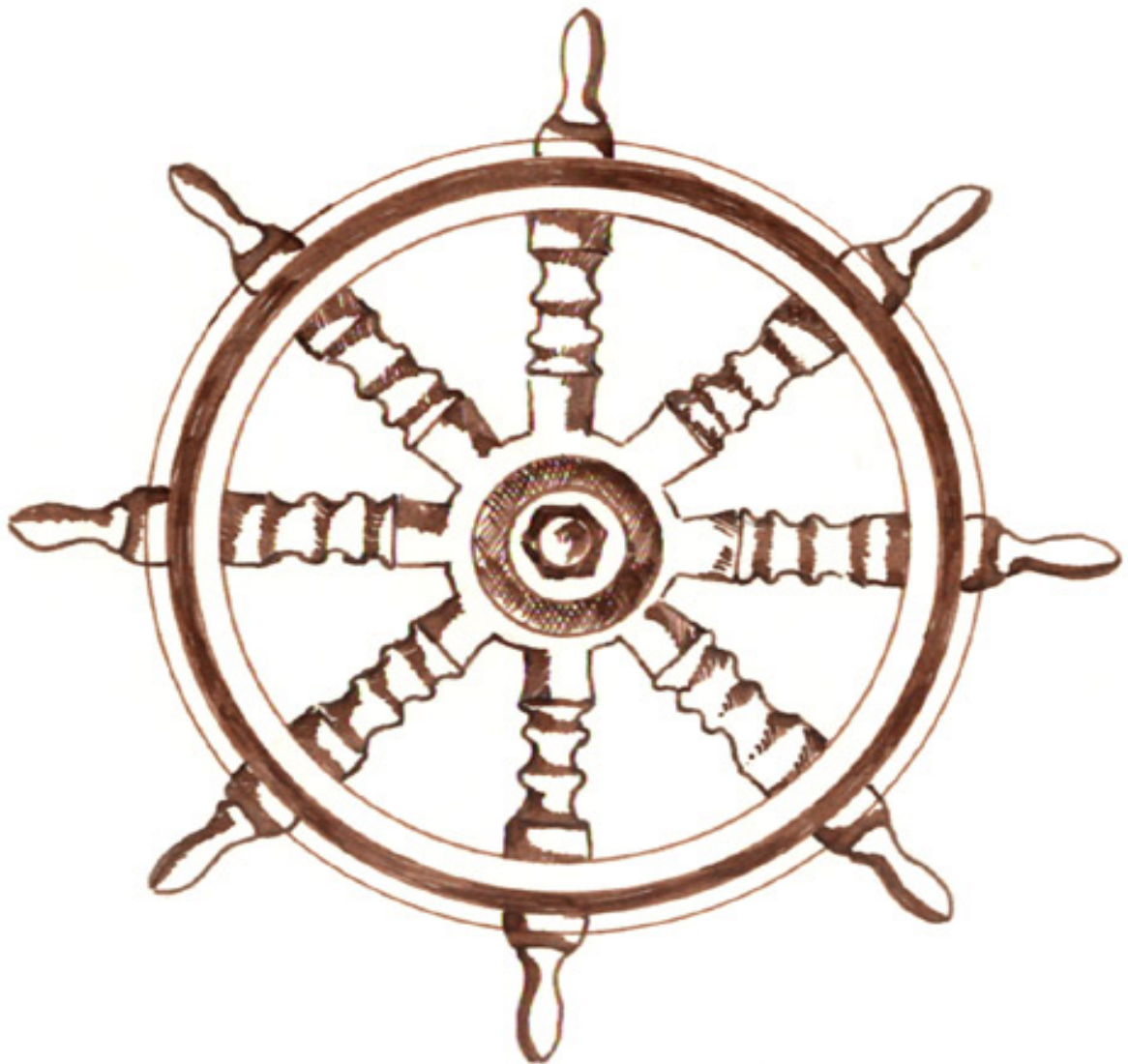


Middle Years Self Guided Museum Trail



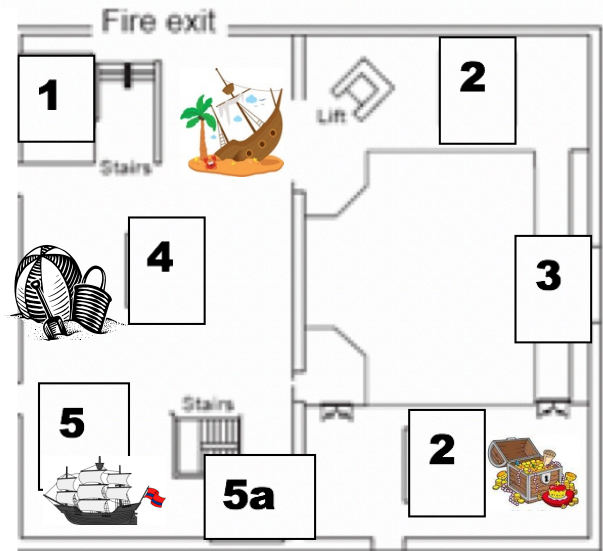
Name: _____

This trail booklet is designed for teachers to use with students during a self-guided visit to the South Australian Maritime Museum. It introduces the main exhibitions and explores the themes, concepts and ideas addressed. The activities in this booklet encourage students to interact with the museum objects by thinking, talking and engaging in hands on activities.

Students must be supervised at all times while in the museum.

Upper Floor

1. **Wrecked! Tragedy and the Southern Seas**
2. **Tapestry of Treasures: The First Nautical Museum**
3. **Figureheads**
4. **Life's A Beach**
5. **First Voyages**
- 5a. **HMS Investigator Anchor**



1

Wrecked

This exhibition tells the stories of some of the 850 shipwrecks off the South Australian coast.



Choose one of the display cases and examine the relics it displays from a shipwreck site. What information could these objects tell you about the shipwreck?

Consider your opinions on these statements and mark where you stand on the continuum. You must be able to explain the reasons for your opinions.

Objects should not be removed from shipwreck sites

Strongly disagree

neutral

strongly agree

Shipwreck sites are a valuable historical resource

Strongly disagree

neutral

strongly agree

Shipwrecks belong to the public

Strongly disagree

neutral

strongly agree

4

Life's a Beach

This exhibition shows how important the beach has always been in the lives of South Australians.



Shark Attack

Mrs. Kitty Whyte was taken by a shark off the Brighton jetty in South Australia's first recorded shark attack in March 1926. There were no more fatal attacks for another 36 years



After the attack on Mrs. Whyte there was a lot of public debate about whether the shark should be killed. What is your opinion on this? Why?

2

Tapestry of Treasures



This exhibition shows part of the oldest maritime collection in Australia.

What do you think are the most important factors a museum considers when deciding which items to add to its collection?

5

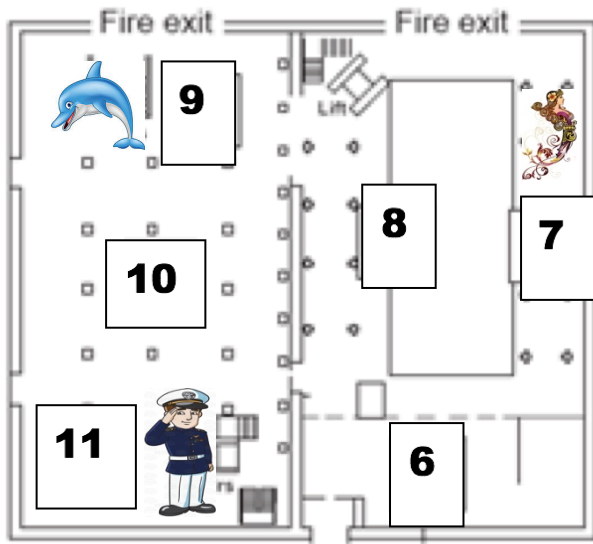
First Voyages



This exhibition looks at the early European voyages of the Australian coast.

Find the map, "Cook's Tracks," and write the name that was given to Australia (1768 - 1780).

Compare Matthew Flinders and Nicholas Baudin's ships. Which one do you prefer and why?



Ground Floor

- 6. Entrance, Shop and Toilets
- 7. Figureheads
- 8. Active II Ketch
- 9. Dolphins: The Port River Pod
- 10. Temporary Exhibition
- 11. Action Stations: Navy

11

Action Stations: Navy



This exhibition looks at the history of the Navy in South Australia.

Find the Protector bell.

Which year is inscribed on the bell? _____

Read the information about the Protector. Write 2 facts about the vessel.



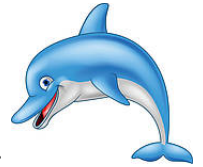
Find the Navy shoulder straps. Draw one of the straps.

What do these straps represent?

Why do you think there are different ranks in the Navy?

9

The Port River Dolphin Pod



This exhibition introduces the dolphins who live in the Port River.

As you look through the exhibition, think about factors that impact on the Port River dolphin pod in different ways.

Positive Impact	Negative Impact

Watch the DVD and think about the issues faced by the dolphins in the Port River. What actions are people like Dr. Mike Bossley and the Whale and Dolphin Conservation Society taking to help them?

8

The Figureheads

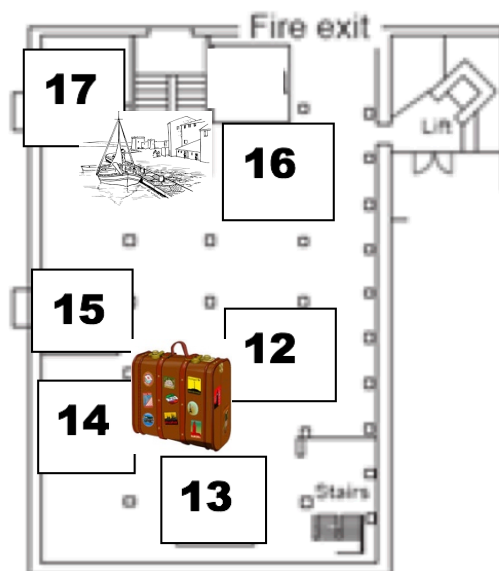


Figureheads are carved or painted figures or emblems that were thought to guide the ship safely through waters.

Find the oldest figurehead on display. Sketch a picture of it below and write 3 facts about it.

Basement

- 12. Bound for South Australia- 1830s cabin**
- 13. Bound for South Australia 1910s cabin**
- 14. Bound for South Australia - 1950s cabin**
- 15. Passenger & Vessels databases**
- 16. Living in Port**
- 17. Torrens Island Quarantine Station**



12 - 14

Bound for South Australia

This exhibition tells us what it was like to migrate to South Australia by ship at different times in history.



Listen to the diaries in each of the cabins. Write some key words to describe the experiences of the passengers.

1830s	1910s	1950s

Work with a partner and list 3 reasons people might want to migrate to another country:

Living in Port



This exhibition looks at the history of Port Adelaide and the communities that have developed around it.

Can you find the following objects?

How many cargo hooks can you find?	
What year was the cast iron elephant made?	
Who does the teapot belong to?	
Which team is the players hat from?	
Find the cross from Reverend Still's grave. In which year did he die on Torrens Island?	

Imagine that you were a wharf side worker in Port Adelaide.
List some things that you would have used to load cargo onto a ship.

Look to find an object that you think is the most important in the exhibition.

Draw it here:

Give a reason for your choice:





Wonderings



Use this page to write any notes or questions you have.