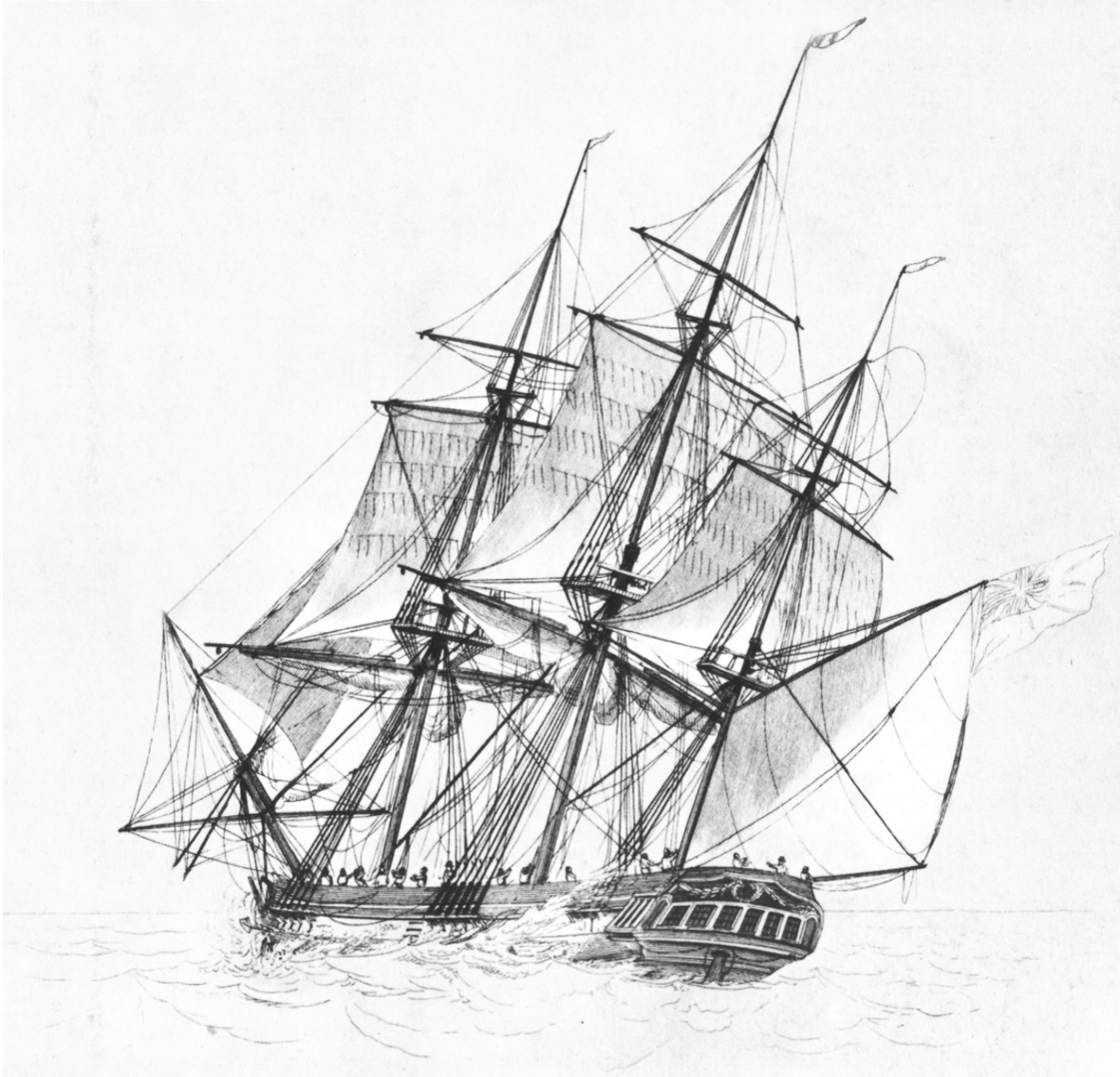


# Senior Years Self Guided Museum Trail



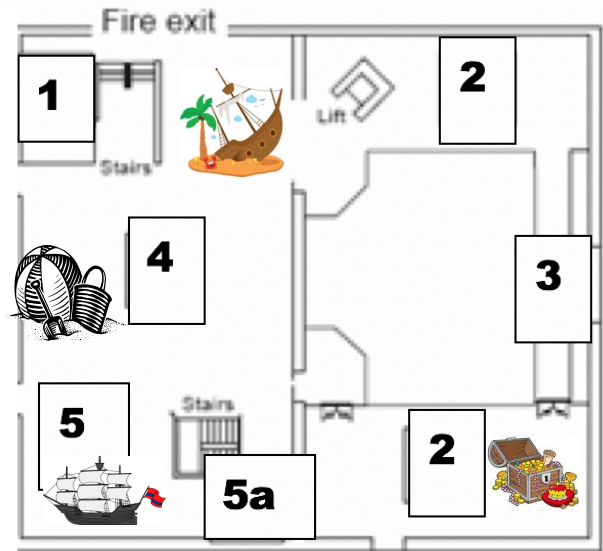
**Name:** \_\_\_\_\_

This trail booklet is designed for teachers to use with students during a self-guided visit to the South Australian Maritime Museum. It introduces the main exhibitions and explores the themes, concepts and ideas addressed. The activities in this booklet encourage students to interact with the museum objects by thinking, talking and engaging in hands on activities.

**Students must be supervised at all times while in the museum.**

## Upper Floor

1. **Wrecked! Tragedy and the Southern Seas**
2. **Tapestry of Treasures: The First Nautical Museum**
3. **Figureheads**
4. **Life's A Beach**
5. **First Voyages**
- 5a. **HMS Investigator Anchor**



1

## Wrecked

This exhibition tells the stories of some of the 850 shipwrecks off the South Australian coast.



Who do you think ship wrecks belong to?

What is your opinion about the general public exploring shipwrecks?

What value do shipwreck sites have to contemporary society?

Examine the illustration '*To the Rescue*' recounting the events of the Star of Greece shipwreck.

How do you think this would compare to modern rescue efforts?

4

## Life's a Beach



This exhibition shows how important the beach has always been in the lives of South Australians.

### *Shark Attack*

Mrs. Kitty Whyte was taken by a shark off the Brighton jetty in South Australia's first recorded shark attack in March 1926. There were no more fatal attacks for another 36 years



After the attack on Mrs. Whyte there was a lot of public debate about whether the shark should be killed. What is your opinion on this? Why?

---

---

2

## Tapestry of Treasures



This exhibition shows part of the oldest maritime collection in Australia.

Discuss the significance of the sailor's chest. What role would this chest play in a sailor's life at sea? What would you include in your own chest if you were about to leave for several months at sea?

5

## First Voyages

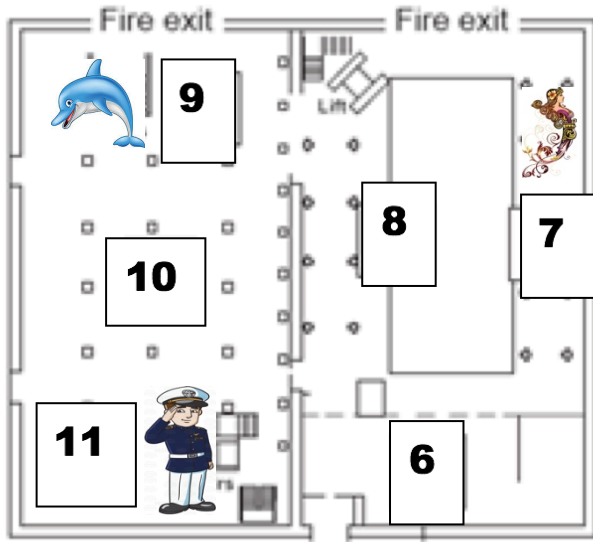


This exhibition looks at the early European voyages of the Australian coast.

Find the map, "Cook's Tracks," and write the name that was given to Australia in 1782.

---

Compare Matthew Flinders and Nicholas Baudin's ships. Which one do you think would have been most efficient in moving through water? Why?



## Ground Floor

- 6. **Entrance, Shop and Toilets**
- 7. **Figureheads**
- 8. **Active II Ketch**
- 9. **Dolphins: The Port River Pod**
- 10. **Temporary Exhibition**
- 11. **Action Stations: Navy**

11

## Action Stations: Navy



This exhibition looks at the history of the Navy in South Australia.

Find the Protector bell.

Which year is inscribed on the bell? \_\_\_\_\_

Read the information about the Protector. Write 2 facts about the vessel.

---



---



---



---

Respond to this impression of a young sailor onboard the HMCS Protector.  
*"Crowds thronged the wharves and all the small boats in the river were packed to get a last glimpse of us and it reminded me of the parting words of Lord Tennyson.....Remember the eyes of the world are upon you. I guess the eyes of Port Adelaide were upon us"*



9

## The Port River Dolphin Pod



This exhibition introduces the dolphins who live in the Port River.

As you look through the exhibition, think about factors that impact on the Port River dolphin pod in different ways.

Positive Impact	Negative Impact

Compare the dolphin skeleton to the anatomy of a human skeleton.

8

## The Figureheads



Figureheads are carved or painted figures or emblems that were thought to guide the ship safely through waters.

Find the oldest figurehead on display. Sketch a picture of it below and write 3 facts about it.

---

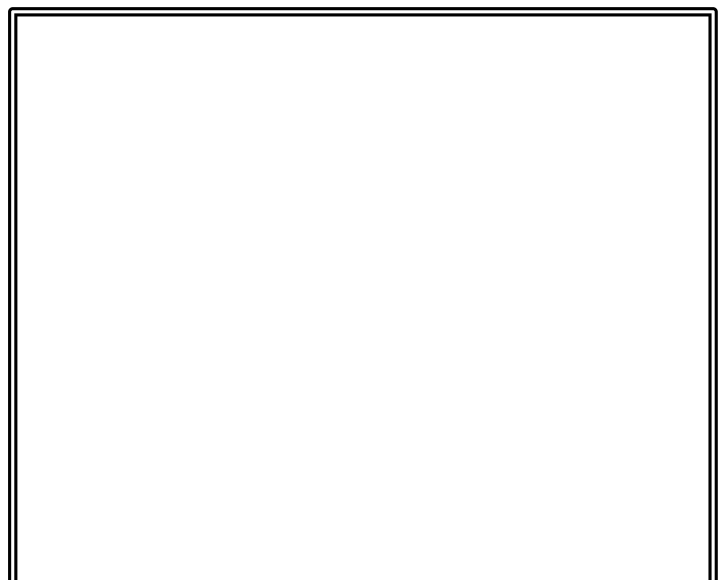
---

---

---

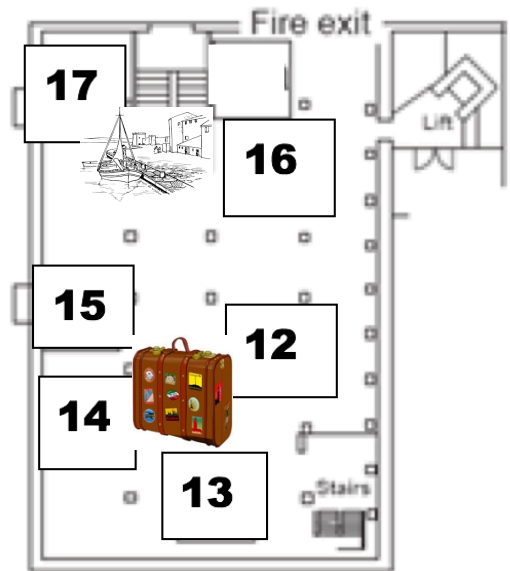
---

---



## Basement

- 12. Bound for South Australia 1830s cabin
- 13. Bound for South Australia 1910s cabin
- 14. Bound for South Australia - 1950s cabin
- 15. Passenger & Vessels databases
- 16. Living in Port
- 17. Torrens Island Quarantine Station



12 - 14

## Bound for South Australia

This exhibition tells us what it was like to migrate to South Australia by ship at different times in history.



### **FREE EMIGRATION TO PORT ADELAIDE, SOUTH AUSTRALIA**

Married Agricultural Laborers, Shepherds, Blacksmiths, Wheelwrights, Sawyers, Tailors, Shoe-makers, Brick-makers, Builders, and all persons engaged in useful occupations may obtain a

### **FREE PASSAGE**

to SOUTH AUSTRALIA, where they are within the regulations of the Colonial Commissioners.

A meeting will be held by Mr. LATIMER, for the purpose of seeing the applicants and deciding on their eligibility

On **TUESDAY, October 15, at BODMIN, at Ten o'clock.**

In the meanwhile all particulars may be known on application to

**Mr. I. LATIMER, Truro.**

AGENT TO H. M.'s COMMISSIONERS.  
All letters must be post-paid or they will not be answered.

E. HEARD, PRINTER, BOOKBINDER, BOSCAWEN-STREET, TRURO.

SOUTH AUSTRALIAN MARITIME MUSEUM

What does this poster tell you about migration policies in the 1840s?

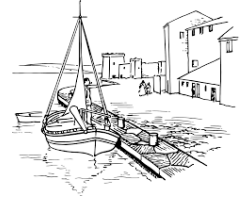
Why would this poster be of interest to people living in England in the 1840s?



Listen to the diary recordings in each of the 3 cabins and compare the experiences of government assisted migrant passengers during three different eras.

16

## Living in Port



This exhibition looks at the history of Port Adelaide and the communities that have developed around it.

Port Adelaide was once known as Port Misery. What factors do you think contributed to this unfortunate nickname?

What were the main factors influencing the quality of working life for Port Adelaide's dockside workers?

Look to find an object that you think is the most important in the exhibition.

Draw it here:

Give a reason for your choice:



# Wonderings



Use this page to write any notes or questions you have.