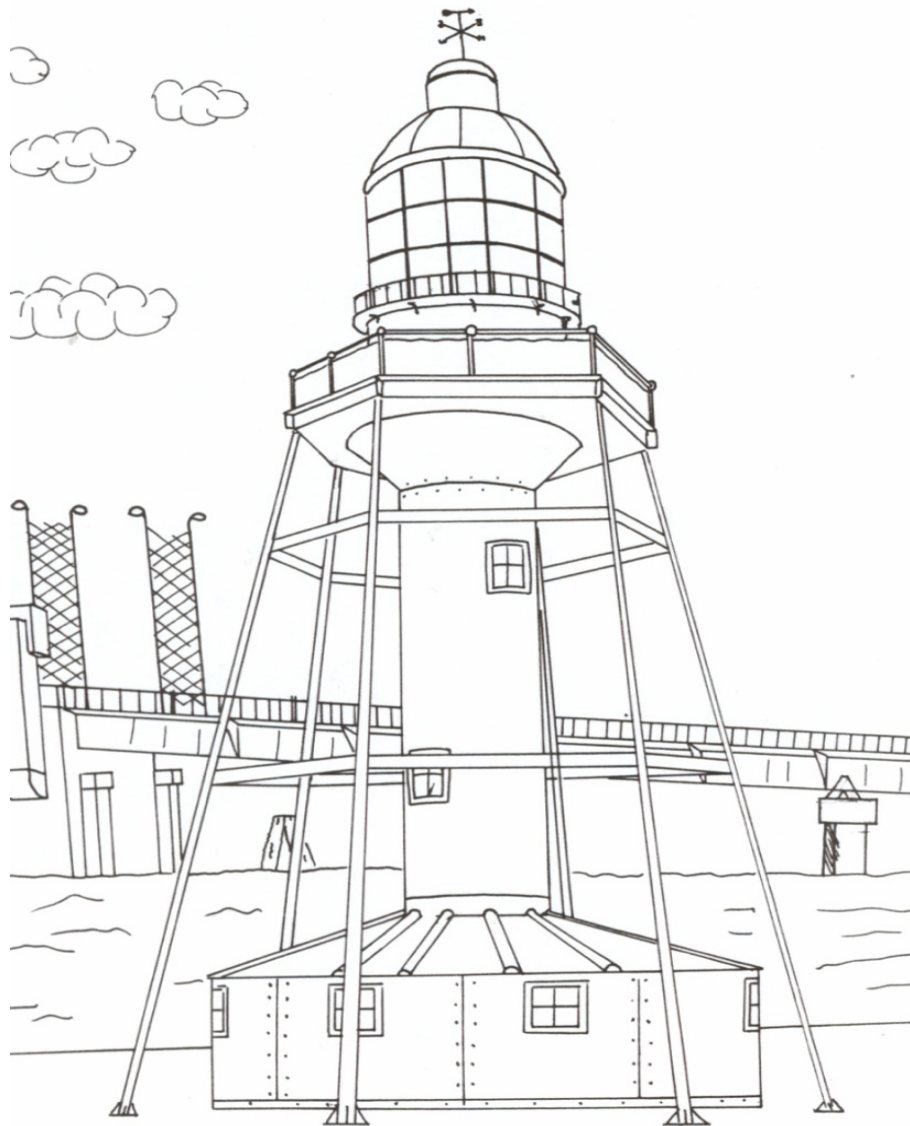


Junior Primary Self Guided Museum Trail

SOUTH
AUSTRALIAN
MARITIME
MUSEUM



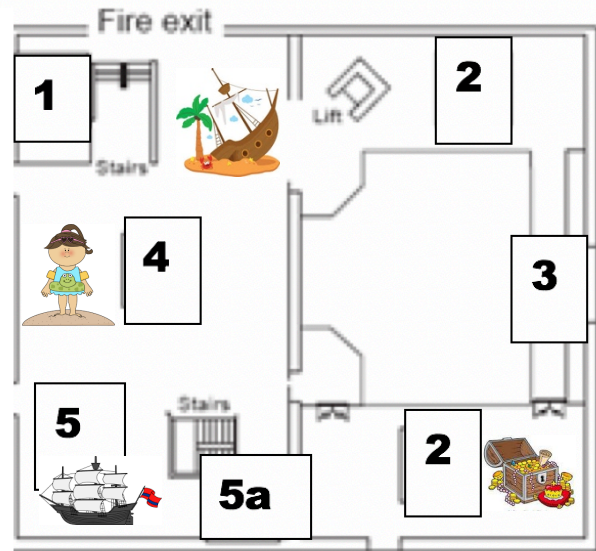
Name: _____

This trail booklet is designed for teachers to use with students during a self-guided visit to the South Australian Maritime Museum. It introduces the main exhibitions and explores the themes, concepts and ideas addressed. The activities in this booklet encourage students to interact with the museum objects by thinking, talking and engaging in hands on activities.

Students must be supervised at all times while in the museum.

Upper Floor

1. **Wrecked! Tragedy and the Southern Seas**
2. **Tapestry of Treasures: The First Nautical Museum**
3. **Figureheads**
4. **Life's A Beach**
5. **First Voyages**
- 5a. **HMS Investigator Anchor**



1

Wrecked

This exhibition tells the stories of some of the 850 shipwrecks off the South Australian coast.



Find the Figurehead without a head!
This figurehead came from the shipwreck of *The Norma*.
How do you think she lost her head?



Draw a new head for Norma.

Can you find the following objects?
Why do you think they were found on a shipwreck?

A shark jaw

A top hat

Some old coins

4

Life's a Beach

This exhibition shows how important the beach has always been in the lives of South Australians.



Find the surfboard in the exhibition and catch a few waves.
How long can you surf before falling off?



Play the clown game with a friend.
Add up your score and write it here:



2

Tapestry of Treasures



This exhibition shows part of the oldest maritime collection in Australia.

Look at the objects in the collection. Find the box of things children like to collect now.

What do you like to collect?

Why do you think people like to collect things?

5

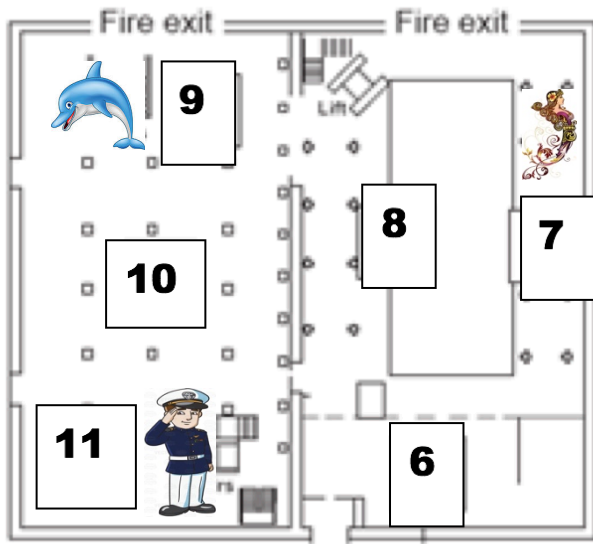
First Voyages

This exhibition looks at the early European voyages of the Australian coast.



Find Captain Cook's chest. What do you think he might have kept in his chest?

Draw a picture of one of the animal specimens the scientists may have taken back to Europe.



Ground Floor

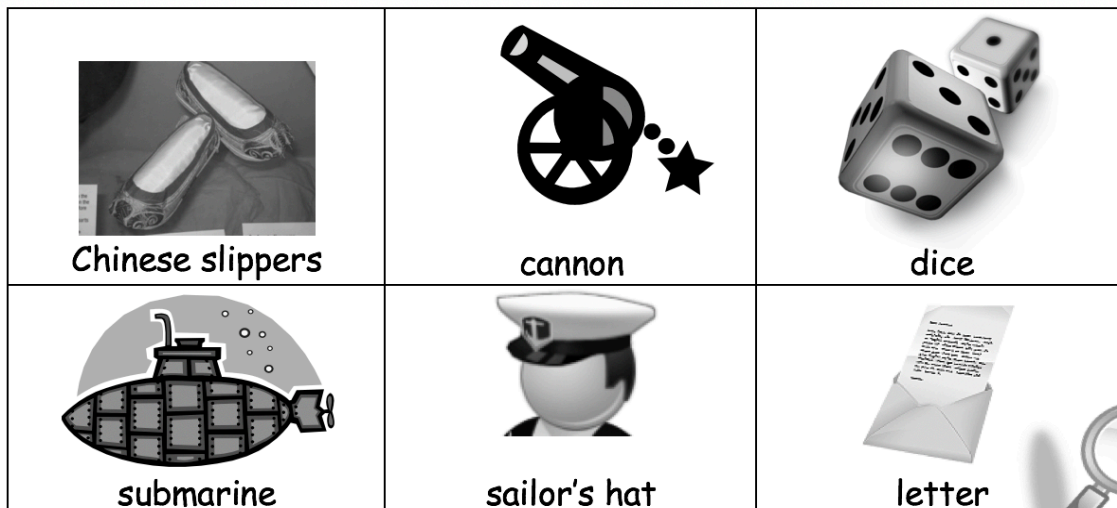
- 6. Entrance, Shop and Toilets
- 7. Figureheads
- 8. Active II Ketch
- 9. Dolphins: The Port River Pod
- 10. Temporary Exhibition
- 11. Action Stations: Navy

11

Action Stations: Navy

This exhibition looks at the history of the Navy in South Australia.

Can you find the following objects?

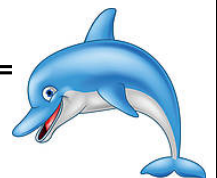


9

The Port River Dolphin Pod

This exhibition introduces the dolphins who live in the Port River.

Find the shapes of the Port River dolphin dorsal fins. Choose one of the dolphins and draw their fin. Why do you think your dorsal fin looks different to all the others?



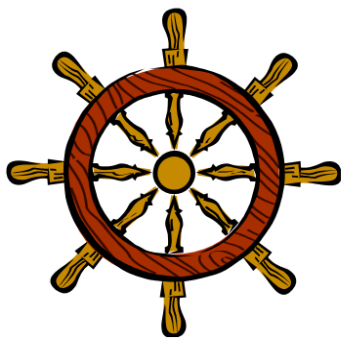
7

The Ketch

The Ketch is a replica cargo vessel.



Can you find...



helm



red and green lanterns



captain's cabin



toilet



cabin for 2 ketch hands



water

8

The Figureheads

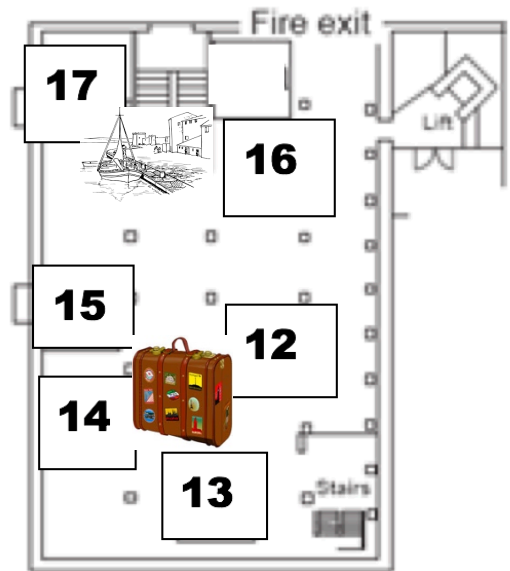
Figureheads are carved or painted figures or emblems that were thought to guide the ship safely through waters.



Draw your favourite figurehead below. List 2 features you like about it.

Basement

- 12. Bound for South Australia- 1830s cabin
- 13. Bound for South Australia 1910s cabin
- 14. Bound for South Australia - 1950s cabin
- 15. Passenger & Vessels databases
- 16. Living in Port
- 17. Torrens Island Quarantine Station



12 - 14

Bound for South Australia



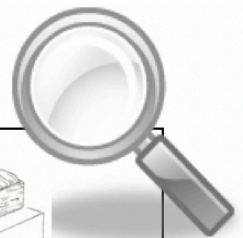
This exhibition tells us what it was like to migrate to South Australia by ship at different times in history.



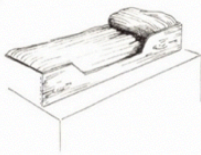



Lie down in one of the bunk beds in the 1830s cabin and imagine what it would have been like to sleep here for more than 120 nights.

Write 2 words to describe how you might feel.

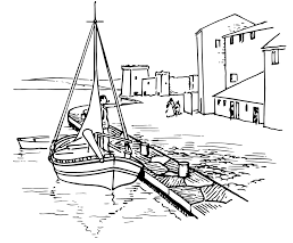
Find the toilet and sit on it. Can you work out how to flush it?

Can you find the following in the cabins?



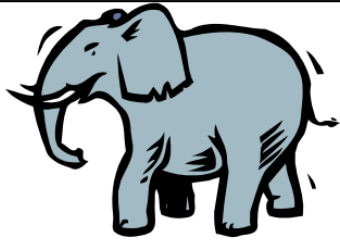
 water barrel	 lantern	 bunk bed
 telephone	 Wash basin	 suitcase

Living in Port



This exhibition looks at the history of Port Adelaide and the communities that have developed around it.

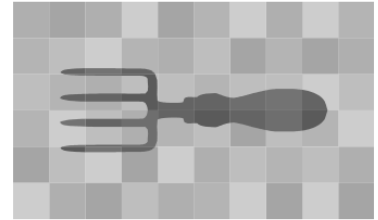
Can you find the following objects?



elephant statue



time clock



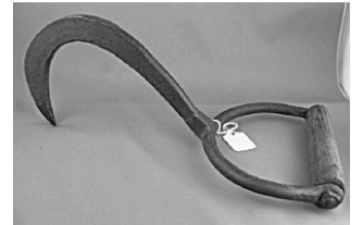
coal fork



rope



trophy



baling hook

Imagine that you were a wharf side worker in Port Adelaide.
Draw some things that you would have used to load cargo onto a ship.



Wonderings



Use this page to write any notes or questions you have.