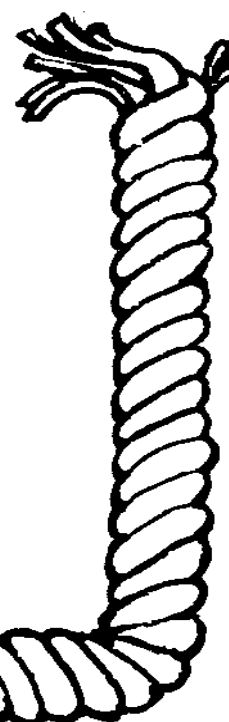
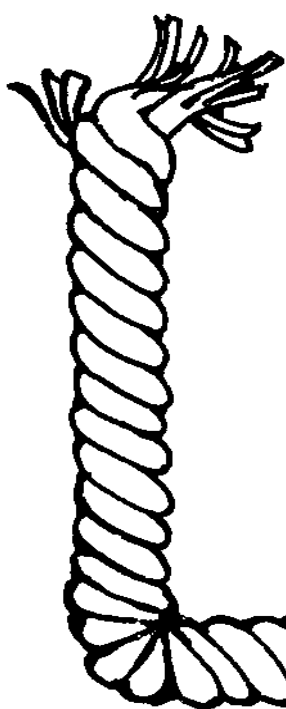
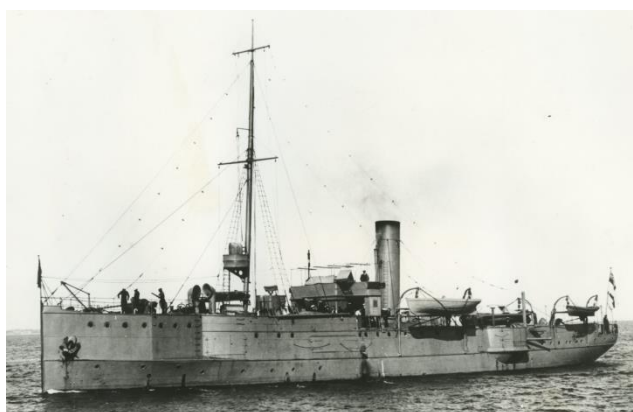


Follow the clues and sail back in time to uncover the past at *the South Australian Maritime Museum...*

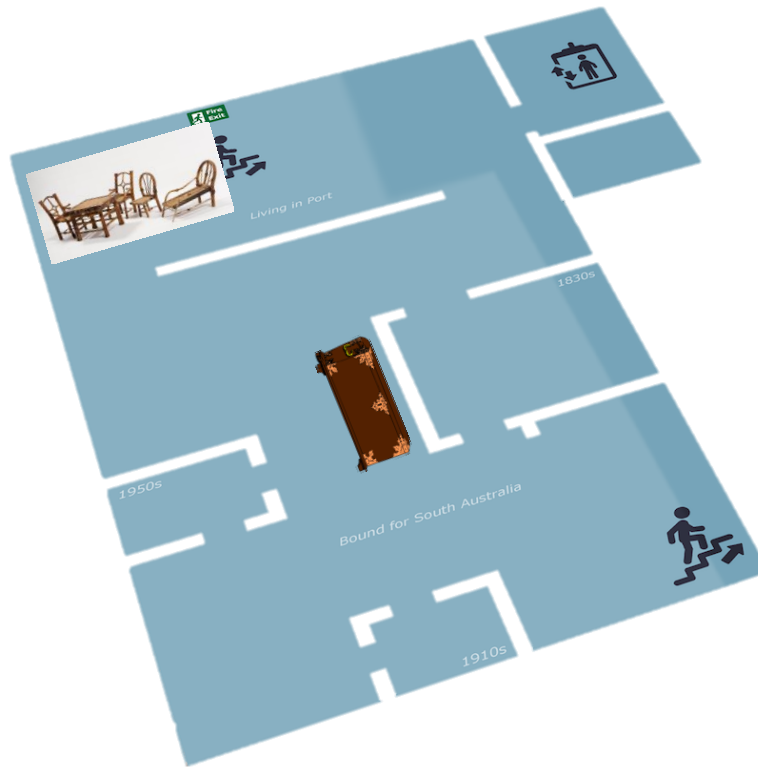


1. Collect your Discovery Kit from the front desk inside the museum.
2. Your kit contains a:
 - Chart
 - Calculator
 - Sand timer
 - Pencil
 - Compass
 - Picture cards
 - Tape measure
 - Key
3. Look at the museum maps inside and identify your current location.
4. Start at any level in the museum. Piece together clues and take on the roles of a ship's crew as you navigate your way through the museum. Use the maps and tools in your kit to solve problems and arrange letters to work out the name of a ship from World War I.
5. As you find the answers to each problem, record the letters below. Make sure to match the question numbers to answer correctly.



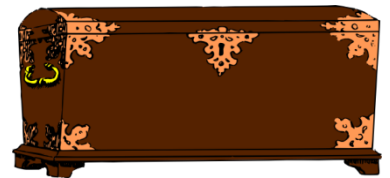
— — — — — — — — —
1 2 3 4 5 6 7 8 9

Basement



2. A ship's **captain** kept their belongings in a chest. Find the Campaign Chest in the *Bound for South Australia* exhibition. Read the museum label to find out which object in your kit would be stored here.

— — — ○ —



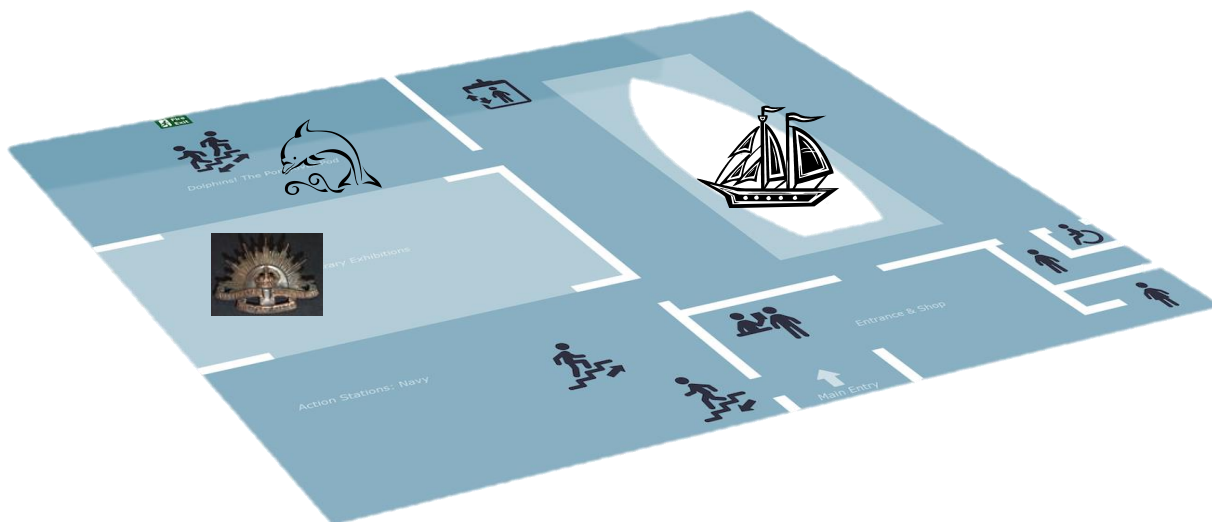
4. Find the Port Adelaide Interactive Map in the *Living in Port* exhibition and select the second map (Port Adelaide Wharfs and Water Frontage).

Sailors used a chronometer or clock to keep time on board early sailing ships. Select an item in your kit that measures time. Use this object and see if you can find the Chinese toy furniture before the time runs out. What object have you selected from your kit?

s a n d ○ — — — —



Ground level



5. Locate the ketch and become the ketch **captain**. Find the ship's wheel and work out which part of the ketch is the front. Find the kitchen. What is the name used to describe this area on a ship?

— — — — —



6. Be a **scientist** and find the *Dolphins in Danger* exhibit. Look at the cards in your kit and circle the object that is missing. Write this word below.

plastic bags

teabags

fishing line

bottles

cigarette butts

hooks

cans

nets

 — — —

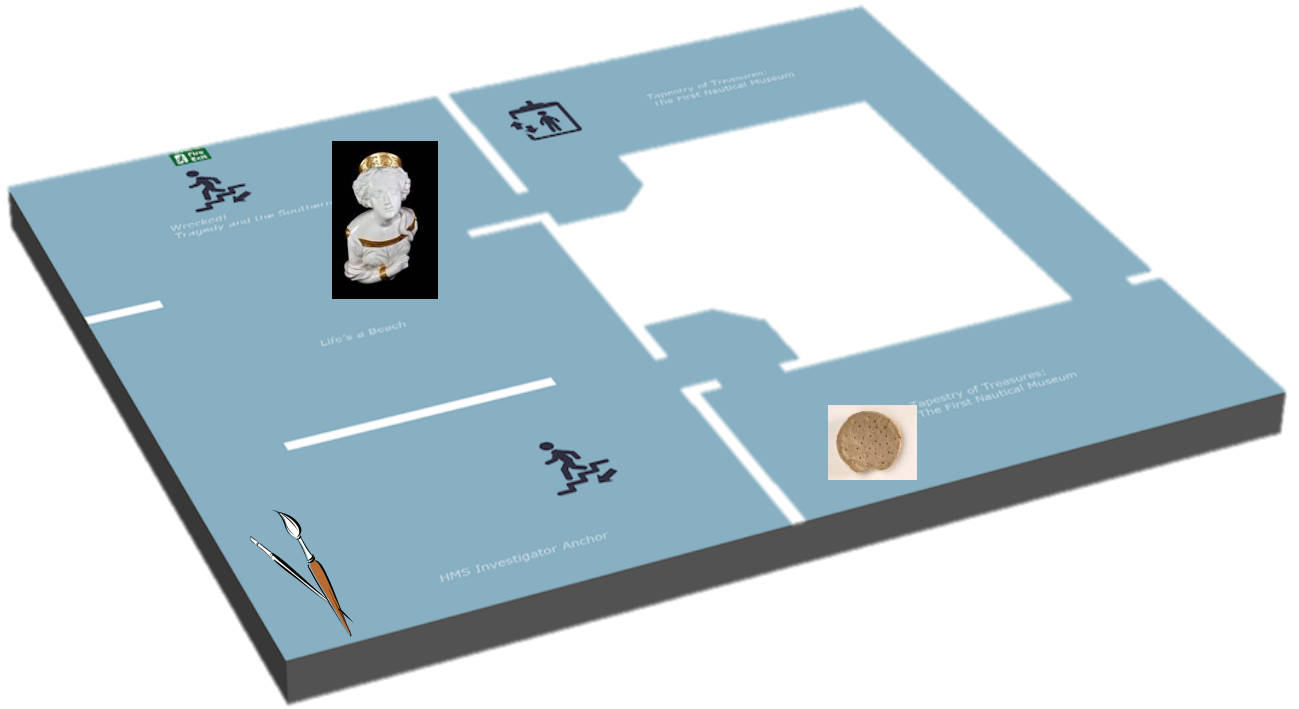


7. Use the compass in your tool kit and head west to the *World War I* exhibition. Can you find an awe inspiring sight? When did South Australia's 10th Battalion leave Outer Harbor?

What was the type of vessel that troops sailed on?

 — — — — — — — —

Upper level



In the early days of seafaring, sailors believed that the ship was a living thing. The ship's figurehead protected the ship and their eyes helped the ship find its way through the ocean.

There are more than 13 figureheads in the museum. Can you find them? Use a tool in your tool kit to list them below:

<hr/>	<hr/>
<hr/>	<hr/>
<hr/>	<hr/>
<hr/>	<hr/>
<hr/>	<hr/>
<hr/>	<hr/>
<hr/>	<hr/>
<hr/>	<hr/>

1. What tool did you use?

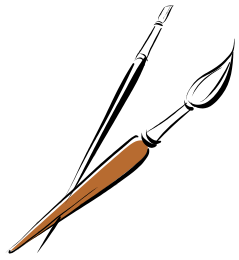
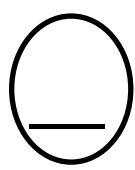
○ — — — — —

9. Locate the *Star of Greece* figurehead in the *Wrecked!* exhibition. Use an object in your kit to work out the number of years that have passed since 1888, when the ship sank in a storm off the coast of South Australia.

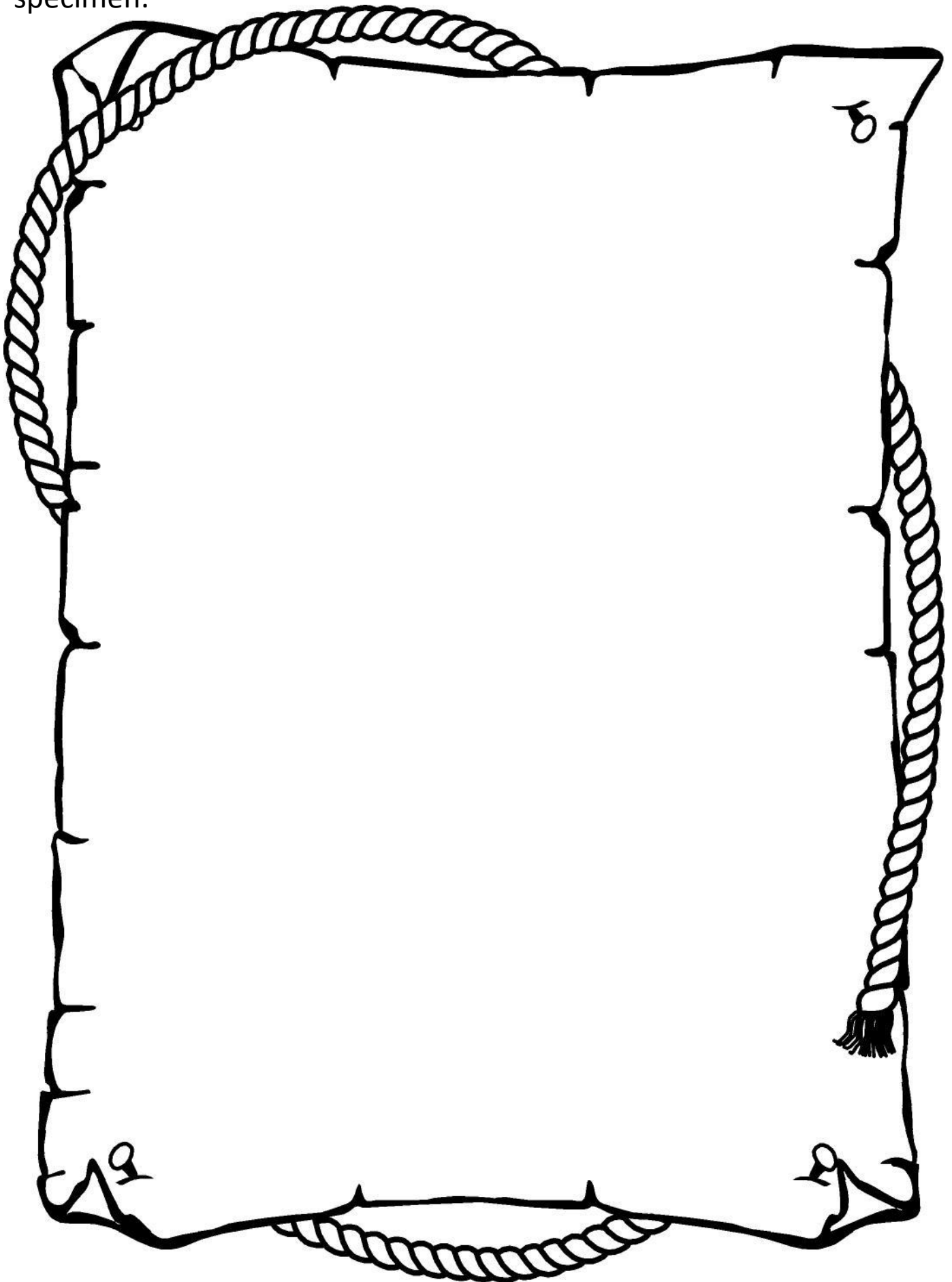
___ ___ ___ yea()s



3. The ship's **artist** would sketch images of their discoveries, including specimens, landscapes, people and objects. Find the treasure chest containing pictures of art works. Use one of the tools to unlock the chest and take a card out. What letter is written on the back of your card? Write it in the circle below. Lock up the box up before moving on.



A **zoologist** is a scientist who studies animals. On Nicolas Baudin's ship, *Le Géographe*, the zoologists collected a variety of marine and land specimens. Find the objects and artworks in the *First Voyages* exhibition. Use a tool in your tool kit and draw your favourite specimen.



8. A **cook** has an important job, making sure the ship's crew are kept well fed. Look in the *'Tapestry of Treasures'* exhibition to find the ship's biscuit, also known as 'hard tack.' This tasteless biscuit is made using...

— — () — — and water



Use a tool in your kit to find an object in the *Perry and Co Limited* cabinet (near the ship's biscuit) that is 30cm long.
What object have you found?



Well done! You have stepped into the shoes of various members of a ship's crew to explore the Maritime Museum.

Piece together the letters from your answers to form the name of a vessel from World War I

Return your kit and contents to the front desk. Check with the museum guide to see if you have the correct answer.

